

# **MicroComm DXL**

## **DXL Music Configuration**

April 2015

## DXL Music Configuration

---

## Table of Contents

---

<b>1</b>	<b>INTENT AND SCOPE.....</b>	<b>3</b>
<b>2</b>	<b>OVERVIEW OF PROGRAMMED MUSIC .....</b>	<b>3</b>
<b>3</b>	<b>USING THE ADMINISTRATOR SOFTWARE PROGRAM.....</b>	<b>4</b>
3.1	DEFINING THE MUSIC SOURCES .....	4
3.2	PROGRAM GROUPS.....	5
3.3	CONFIGURING THE INTERCOM STATIONS .....	6
3.4	CONFIGURE STATION GROUPS .....	7
3.5	SETTING UP A TIMED SCHEDULE .....	9
3.6	HOST PROGRAMMING:.....	12

## 1 Intent and Scope

---

A DXL system has the capability to allow pre-selected music channels to be available and broadcast to individual intercom stations. At the intercom station a single push button is used to turn on/off the music sources and to cycle through the channels with two different volume setting available for each individual channel.

This document describes how the Administrator Software is used to set up a system for programmed music to be made available to a group of stations and how to set up a timer to automatically turn on and off the programmed music at specified times during the day.

## 2 Overview of Programmed Music

---

Setting up a DXL system to have program music sources available to a group of intercom stations involves several steps using the Administrator Software. The steps include:

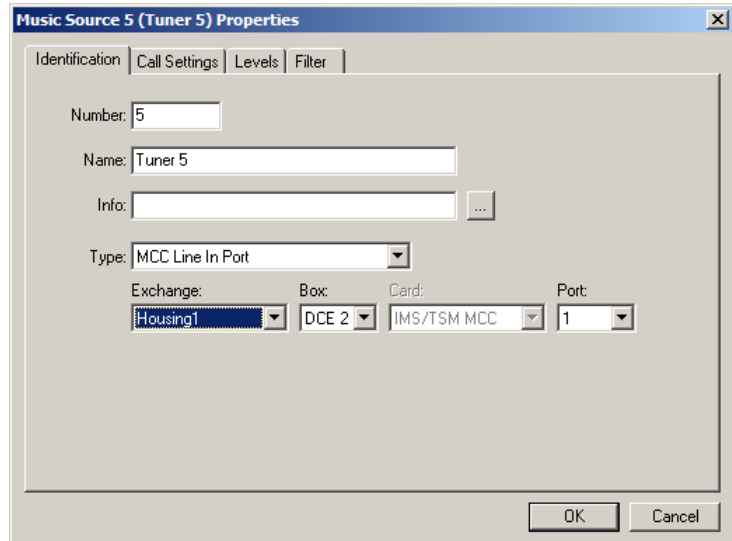
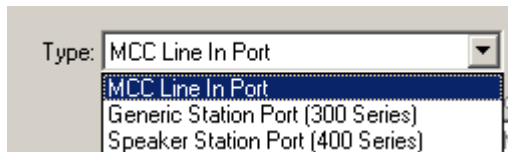
1. Setting up music sources within the DXL system. The music sources enter the DXL system via line-level input jacks on the DCCs or DCEs or from the station output lines that are normally used to connect to intercom stations.
2. Create a Program Group selected from the available Music Sources.
3. For each station that is to have program music available define the switch that will be used to select a music channel.
4. Create a group of cells that can be turned on or off with a single command and which master station(s) will have the authority to implement the control.
5. Create a timer that will turn on and off the available program at specified times.

### 3 Using the Administrator Software Program

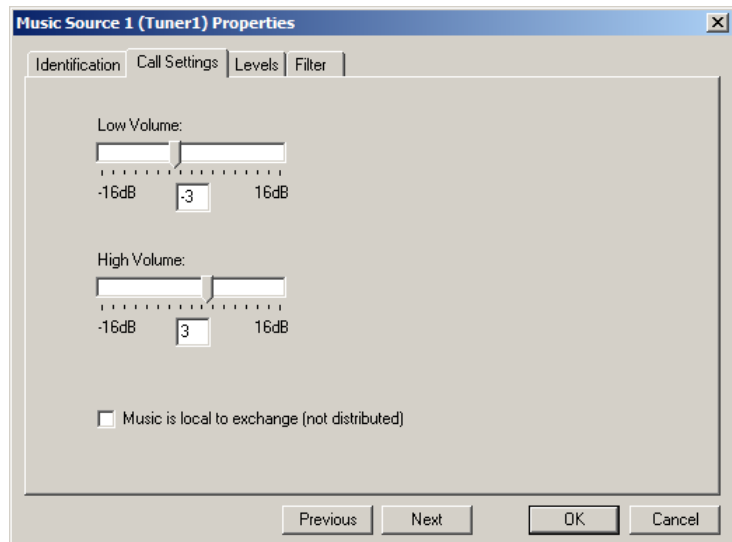
#### 3.1 Defining the Music Sources

With **Configuration Editor** select **Music Sources** from **Configure**: Click on the **Add...** button and a dialog box with 4 entries Identification, Call Settings, Levels and Filter allows you to define a music sources.

On the **Identification** tab type in a number and name for the source and select the line input port (note: the **Type**: setting is a recent addition to our software). The drop down menu for the **Type**: of source is shown below.

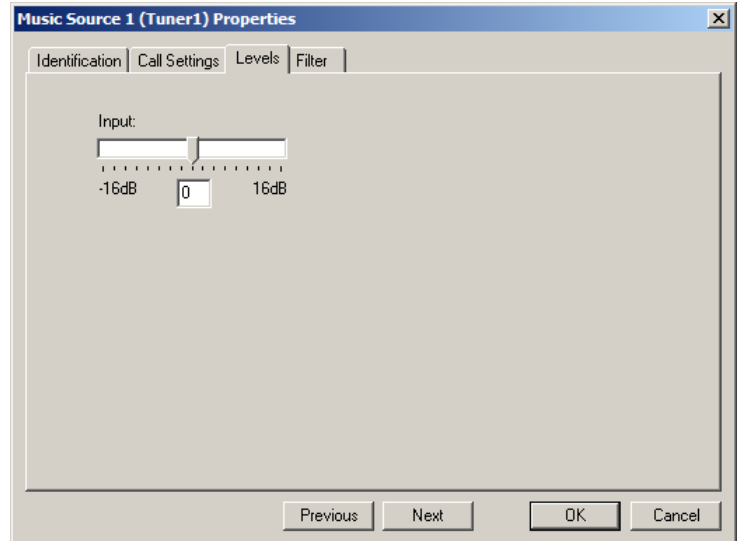


The **Call Settings** tab allows you to set a high and low volume setting for the music (so the music button will toggle from music 1 low, music 1 high, music 2 low, ... until off. The steps between low and high volumes are adjustable, as shown.



The **Levels** tab allows you to adjust the overall volume level – leave it at 0 to start but if the source is too loud or too quiet and doesn't have a volume control you can control the overall music volume with this setting.

The **Filter** tab allows you to filter the audio being broadcast but is rarely used and you can normally leave it at the default setting (no filter).



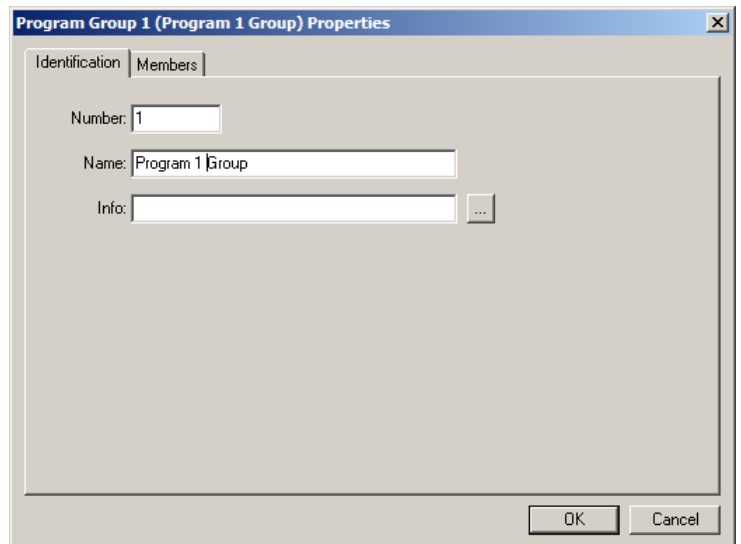
## 3.2 Program Groups

Once the music sources have been created a program group can be formed, i.e. a group of music sources that selected intercom stations will be allowed to listen to.

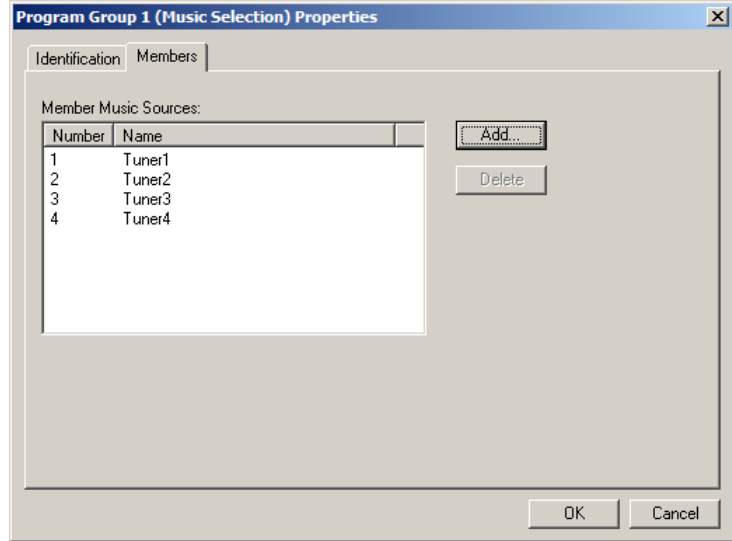
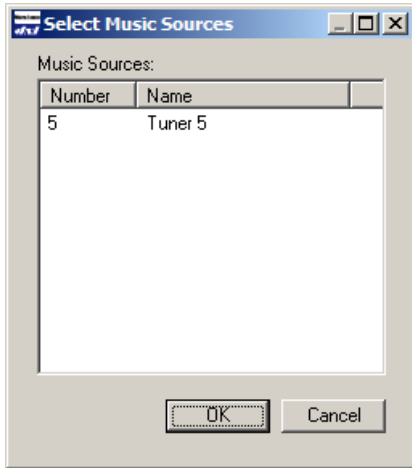
In most cases you will have only one program group, listing all music sources available. Some facilities have intercoms in the staff room where they want more music sources available, in this case you may have two program groups, one for inmates with a restricted source list, another for staff with a full source list.

With **Configuration Editor** select **Program Groups** from **Configure**: Click on the **Add...** button and a dialog box with two tabs **Identification** and **Members** allows you to create a program group. The **Identification** tab type in a number and name for the program group.

Note that up to 8 music sources can be included in a program group (each with two volume levels).



The **Members** tab allows you to select all the intercom stations that will be allowed to listen to the program group. Clicking on the **Add...** button will bring up a list of music sources not yet included in the group. From this list select the additional music sources that are to be included in the program group.

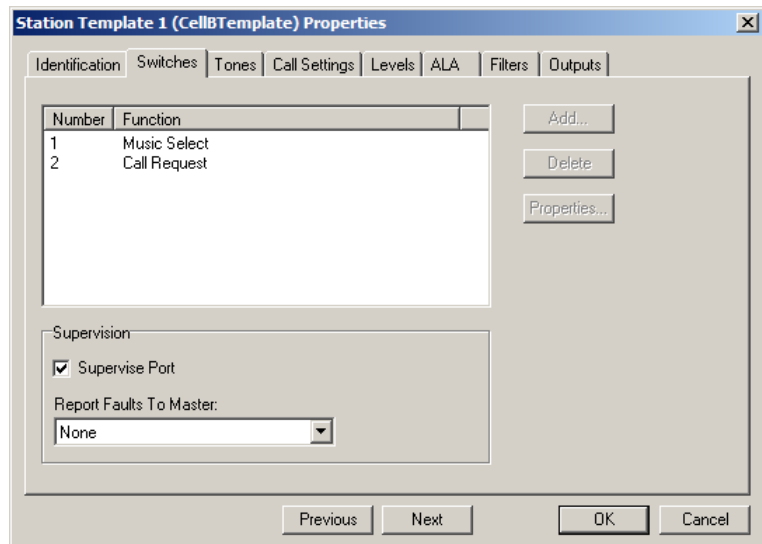


### 3.3 Configuring the Intercom Stations

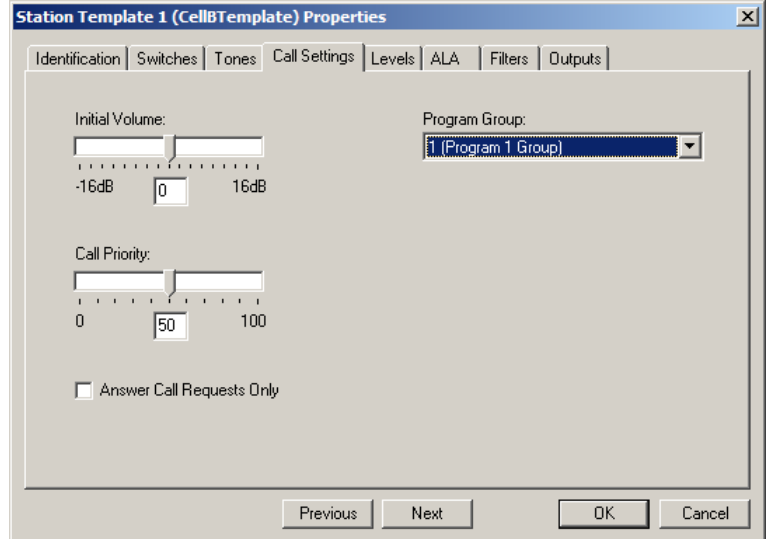
Normally only Intercom Stations with two switches would have music selection capability, one switch would be used as a call request switch and the other a music select switch.

In order to configure a station switch as a music select switch you will need to select from the **Configuration Editor** either **Configure: Station Templates** or **Configure: Stations** depending on whether your stations are a template or created individually.

Once you have selected the station or template, go to the **Switches** tab. Configure Switch 2 as the call request switch as usual, then configure Switch 1 as a Music Select switch by setting the **Function** to Music Select.



Next go to the **Call Settings** tab and under **Program Group** select the program group of music sources that this station's (template's) music button will be allowed to cycle through.



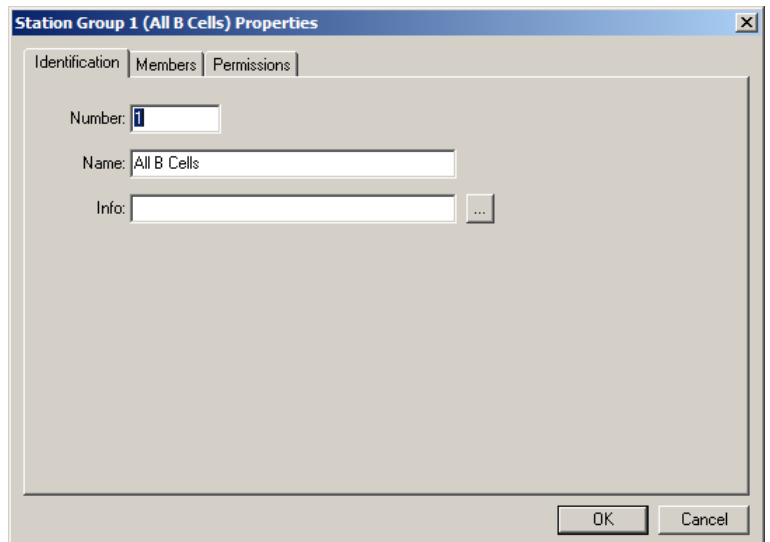
### 3.4 Configure Station Groups

The next step is to create a group or groups of intercom stations that will be turned on and off with one command or one timing schedule.

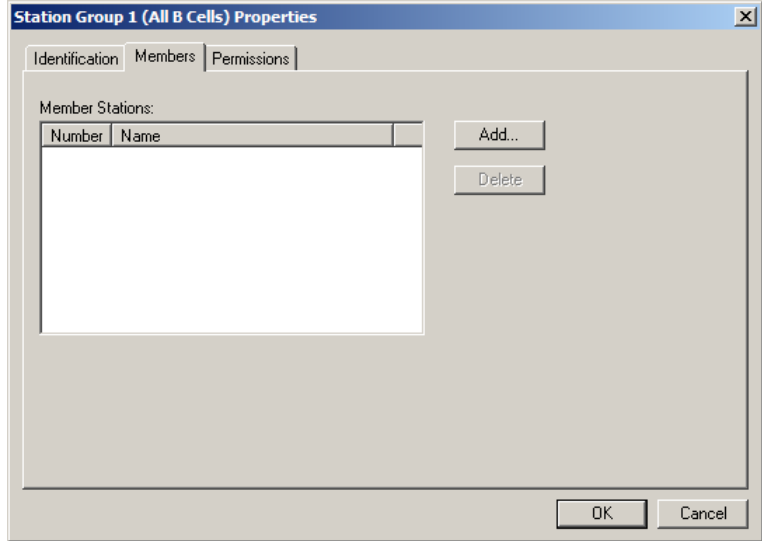
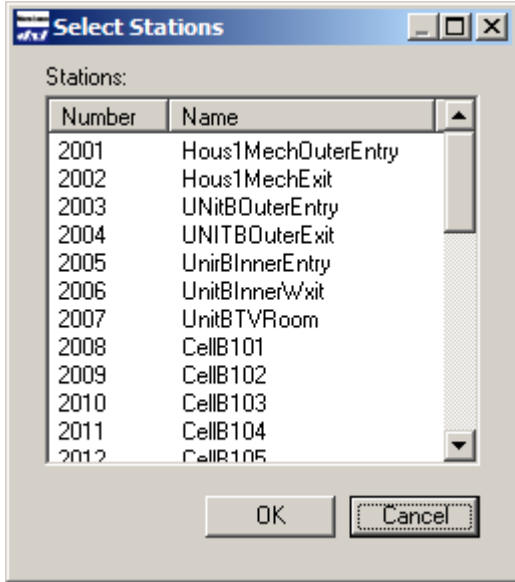
If you are simply going to enable/disable all music in all cells in all pods at once, you will only need one group. If you might disable them one pod at a time, you will need one group per pod.

From the **Configuration Editor** select **Configure: Station Groups** and click on the **Add...** button to bring up a 3 tab dialog box with the tabs Identification, Members and Permissions.

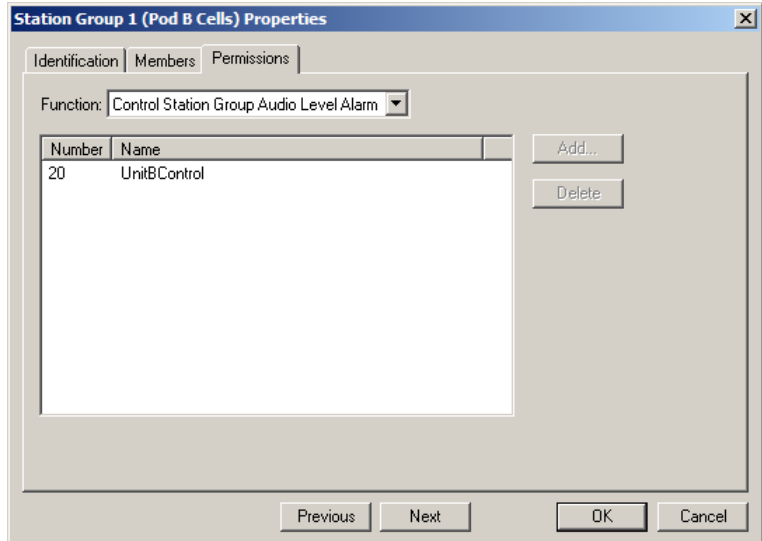
On the Identification tab type in the **Number** of the group and **Name**.



With the **Members** tab and click “Add...” and a pop-up window that lists the stations not presently included in this group will be displayed, from this list select the stations that should be included in the group.



The **Permissions** tab allows you to specify which master stations (IMS440 or IMS640) have permission to enable/disable the music sources to the Station Group. Use the drop down menu **Function:** to select **Control Station Group Program**.



To control stations individually you may also need the “Control Station Program” permission. Note this is not required for timed enable/disable or from touchscreen/PLC control assuming you have the Systems settings to ignore permission checks for host controlled masters.



### 3.5 Setting up a Timed Schedule

In order to set up a timed schedule to enable/disable the music source you need to create schedules, one for each on and off time.

From the **Configuration Editor** select **Configure: Schedules**. Click the **Add...** button to open a Schedule Window with two tabs, **Identification** and **Schedule**. Fill in the **Number** and **Name** for the Timer.

The screenshot shows the 'Schedule 1 (Pod B Music) Properties' dialog box with the 'Identification' tab selected. The 'Schedule' tab is also visible. The 'Number' field contains '1' and the 'Name' field contains 'Pod B Music'. The 'Info' field is empty with a browse button (...). The 'OK' and 'Cancel' buttons are at the bottom right.

The Schedule tab brings up the following window. Select the **Add...** button to bring up a window that allows you to specify the times that the music sources will be enabled.

The screenshot shows the 'Schedule 1 (Pod B Music) Properties' dialog box with the 'Schedule' tab selected. The 'Identification' tab is also visible. The 'Include:' and 'Exclude:' sections each have a list box and buttons for 'Add...', 'Copy...', 'Edit...', and 'Delete'. The 'Limits:' section has checkboxes for 'Start on' (2000-01-01 at 00:00) and 'End by' (2099-12-31 at 23:59). The 'Next Occurrences:' section has three 'Never' entries. The 'OK' and 'Cancel' buttons are at the bottom right.

# DXL Music Configuration

**Date-Time Specifier**

Months of the Year:

Jan.    Feb.    Mar.    Apr.    May    Jun.    All  
 July    Aug.    Sept.    Oct.    Nov.    Dec.    None

Days of the Months:

days 1 to 31        

Days of the Week:

Mon.    Tue.    Wed.    Thu.    Fri.    Sat.     
 Sun.  

Hours of the Day:

hour 19        

Minutes of the Hour:

minute 0

**Add Day(s)**

Single: 1

Range: From 1 to 31 every 1

**Add Hour(s)**

Single: 19

Range: From 0 to 23 every 1

**Add Minute(s)**

Single: 0

Range: From 0 to 59 every 1

The resulting schedule for the On times is shown on the right.

**Schedule 1 (Pod B Schedule) Properties**

Identification   Schedule

Include:

Every day At 19:00           

Exclude:

Limits:

Start on 2000-01-01 at 00:00  
 End by 2099-12-31 at 23:59

Next Occurrences:

Thu 2015-04-30 19:00  
 Fri 2015-05-01 19:00  
 Sat 2015-05-02 19:00

## DXL Music Configuration

Create a similar schedule for the Off times. In order to implement the automatic enable/disable schedule you need to implement a Scheduled Operations.

**Schedule 2 (Pod B Schedule Off) Properties**

Identification | Schedule

Include:

- Every day At 22:30

Exclude:

Limits:

Start on 2000-01-01 at 00:00

End by 2099-12-31 at 23:59

Next Occurrences:

- Thu 2015-04-30 22:30
- Fri 2015-05-01 22:30
- Sat 2015-05-02 22:30

Previous Next OK Cancel

From the **Configuration Editor** select **Configure: Scheduled Operations** then click on the Add... button to open Scheduled Operations window with two tabs, **Identification** and **Operation**. Fill in the Identification number and name for the Scheduled Operation.

**Scheduled Operation 1 (Pod B Music Control) Properties**

Identification | Operation

Number: 1

Name: Pod B Music Control

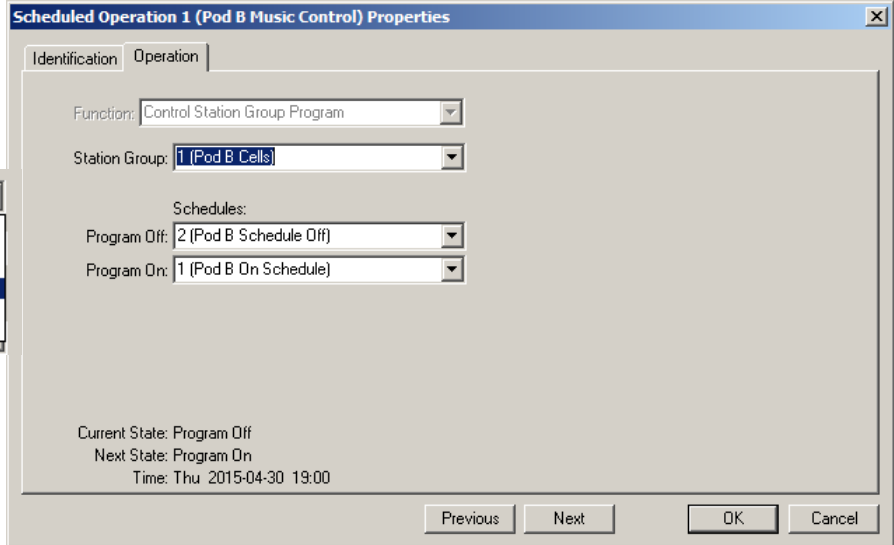
Info: ...

OK Cancel

From the Operations tab select **Function: Control Station Group Program** from the drop down menu.



From the drop down menus select the Program Off and Program On entries.



Note the bottom portion of the screen shows whether the music would be On or Off at the present time and the next time it will be changed to the other state.

### 3.6 Host programming:

You can control music on stations individually or through the groups above.

To turn the music button on or off to a single station send the command EnbM (72)

EnbM <station> <state>

To turn the music button on, state is 1, to turn off the music button, state is 0.

For example, to turn off station 100, send

```
EnbM 100 0
```

To turn the music button on or off to a station group send the command EnGM (244)

EnGM <group> <state>

To turn the music button on, state is 1, to turn off the music button, state is 0.

For example, to turn on all stations in group 200, send

```
EnGM 200 1
```

Note: Whenever a music button is turned off through the master, a timed schedule, or the host interface, if there is currently music playing at the station the music will be shut off. From that point on, the music button will not do anything until the music button is re-enabled, at which point all stations will start with music off and if the inmate wants to listen to music they will have to press the music button to start selecting music. (i.e. the music does not turn to the last channel it was at when it is re-enabled, it starts from off and can be selected from there).