

# Axis<sup>AX</sup>

## Universal Communication Module

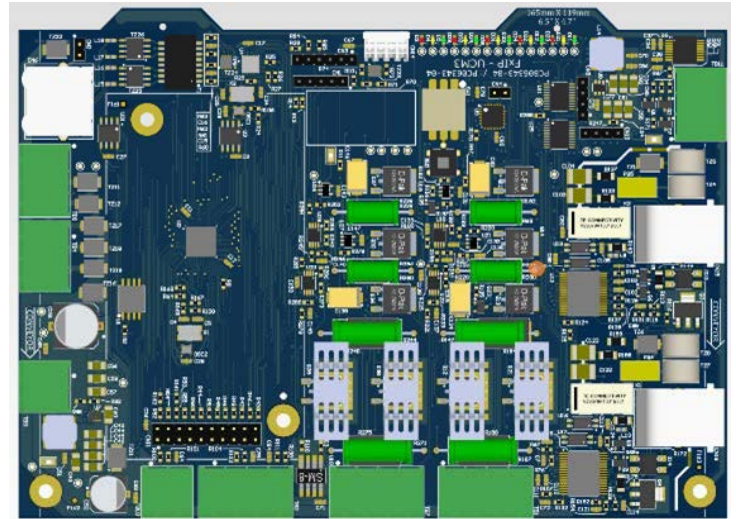
The Advanced AX-UCM3 digital alarm communicator is a POTS dialer which allows for the reporting of events to a monitoring facility. The AX-UCM3 digital alarm communicator can be configured for single or dual line operation and uses the Security Industry Association (SIA) and Ademco (Contact ID) protocols. The AX-UCM3 is programmed via a password-protected ethernet port connected to a user's personal computer

The Advanced AX-SEB2 is a serial expansion board which interfaces the Axis AX AX-CTL series to the AX-UCM3 digital alarm communicator. The serial expansion board provides 16 VDC power and communications to the AX-UCM3 via the serial expansion port located on the AX-CTL base card. In addition, the AX-SEB2 also has a 16 VDC @ 0.325A special application powered output (TB1 0V and 16V) for connection to a 3rd party POTS line converter (i.e. NAPCO Security Technologies Inc, StarLink™ UL-listed for commercial fire SLE Series Sole Path, Dual Path Alarm Communicators).

The UCM3 is designed to mount on a CTL-1C mainboard or on the sidewall of the cabinet enclosure on all other CTL or CCM models. The UCM3 comes with a universal mounting plate and associated hardware for easy installation. The UCM3 is equipped with two RJ-45 Jacks and cables for easy installation and connection to a Napco Starlink or equal type of IP and/or cellular communicator. The UCM3 may also be connected directly to older POTS-style phone lines in rural areas where POTS lines may still be available and there is no internet or cellular service available.

The Advanced UCM3 receives system data from the associated SEB2 (Serial Expansion Board) which sends fire alarm data to the UCM-3 for conversion to the selected protocol (Contact ID or SIA).

The UCM3 does not require any special programmer or tools and has a built-in webserver that allows programming directly from a laptop internet browser connected to the ethernet port on the UCM3. The more common method of programming can be done via the Advanced PC-NET programmer software for setting up the UCM3 to communicate with the 3rd party central station.



### Features

#### Communication Formats:

- Contact ID (Ademco)
- SIA 300 (Security Industry Assn)

#### Onboard Diagnostic LEDs:

- Heartbeat - Data Comm (flashing green. Red when comm is lost)
- Line 1 Status (yellow)
- Line2 Status (yellow)
- General Trouble

#### Other:

- Built-in webserver
- Works with both POTS lines & IP/cellular communicators
- Primary & secondary outputs
- Ethernet port (used for programmer via webserver)
- Input voltage 16 VDC (via SEB2)

### Listings and Approvals

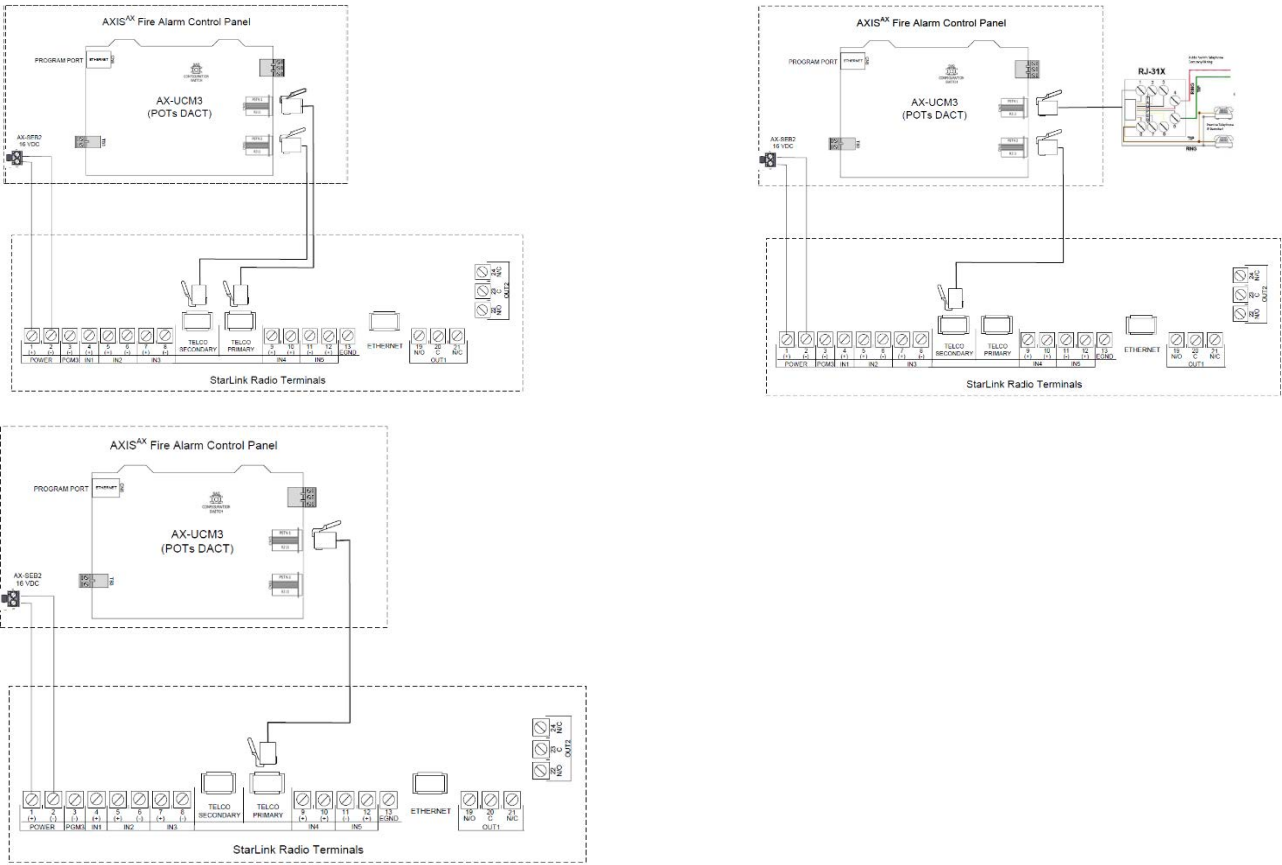
- UL 864, File S35979
- FCC Class A, Part 15
- FCC Part 68

Specification

AX-UCM3	
Input Voltage	16VDC via the SEB2
Current Draw	Standby: 74mA, Alarm: 88mA

AX-SEB2	
Input Voltage	24VDC
Current Draw	Standby: 15mA, Alarm 18mA

Wiring



Order Codes and Options

AX-UCM3	Universal Communicator
AX-SEB2	Serial Expansion Board