

# Axis<sup>AX</sup>

## Switch/LED Driver Module

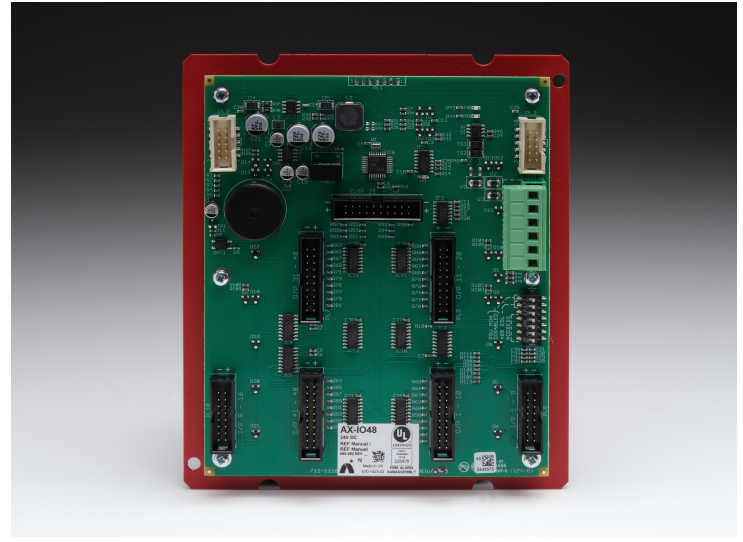
Providing superior flexibility and customization, the Switch/LED Driver Module (AX-I/O-48) provides full control and annunciation of any individual input, output, zone, or group of devices on an Axis AX Series Intelligent Fire Alarm Control Panel or Axis AX Series network. The level of annunciation and control is totally controlled by the system programming and the installation requirements.

To meet this level of flexibility, the AX-I/O-48 is a freely programmable I/O module, providing 16 switch inputs and 48 LED driver outputs. Switch inputs and LED driver outputs can be completely field programmable based on user requirements.

The AX-I/O-48 is easily configurable utilizing the Advanced PC-NeT field configuration tool, which works in a Windows environment. Switch inputs can be programmed to bypass (disable/enable) points, zones, and/or groups. They can also be programmed to turn On/Off relay points, NAC circuits, city connections, or they can be configured to provide complete HOA (Hand-Off-Auto) control functionality. When interfacing to Listed annunciators each I/O can be configured based on annunciator requirements.

LED driver outputs are programmable for a number of status indications of points, zones and/or groups within the system, including alarm, supervisory, trouble, switch active, relay active, etc. In addition, LED driver outputs can be programmed for primary and secondary status events, along with flash rates based on last known status/event (i.e: off, on steady, 1/2 second flash or 1 second flash).

Up to 16 AX-I/O-48 modules can be connected to an Axis AX Series Intelligent Fire Alarm Control Panel, providing 256 switch inputs and 768 LED driver outputs. Switch inputs and LED driver outputs can be assigned to a single Axis AX Series Intelligent Fire Alarm Control Panel or can be transmitted over the Advanced Ad-NeT-PluS peer-to-peer network to other network nodes (FACPs). In addition, other Axis AX Series Intelligent Fire Alarm Control Panels on the network can have their own set of AX-I/O-48 modules.



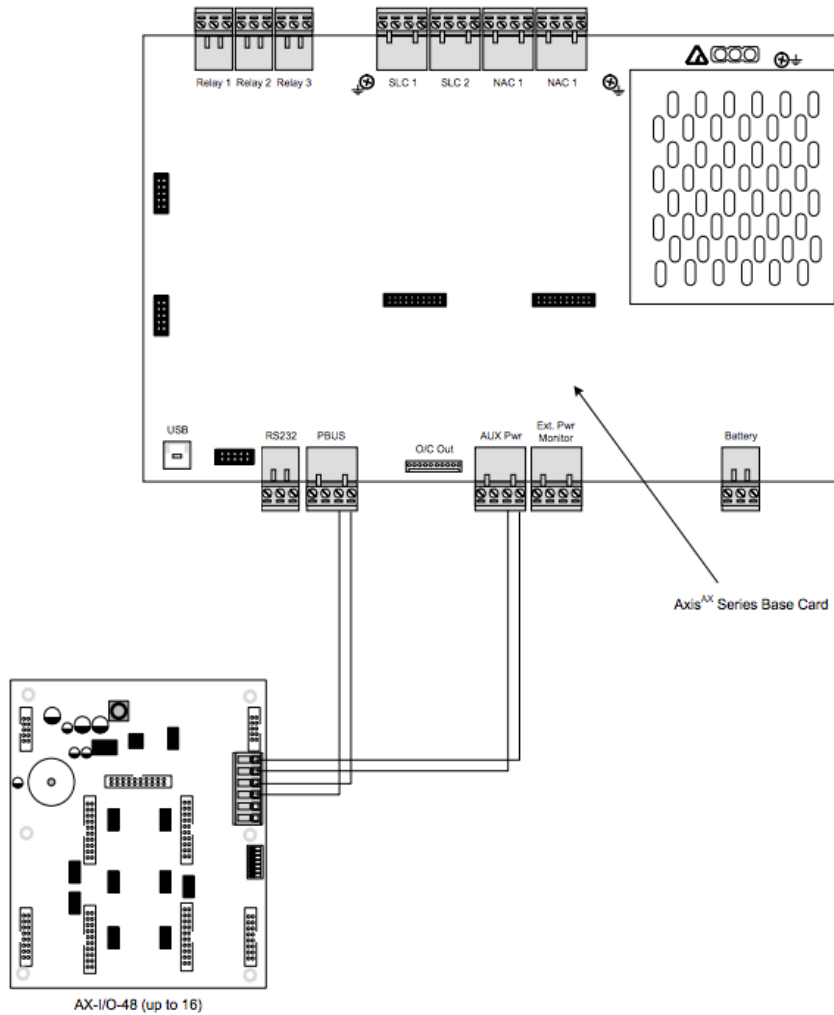
### Features

- Ideal for Interfacing to Custom Graphic Annunciators
- Freely Programmable Driver Module
- 16 Switch Inputs and 48 LED Driver Outputs
- Field Programmable with PC-NeT Tool
- Communicates via PBUS (RS-485 Network)
- Adaptable to many Listed Annunciators
- Each Axis AX FACP Supports up to 16 Modules
- Compact, Attractive Appearance
- Simple DIP Switch Addressing
- Can be Installed Remotely from Axis AX FACP
- Supervised External Trouble Input
- Configurable On-Board Piezo (Buzzer)
- Multi-Module Daisy Chaining

### Listings and Approvals

- ETL ANSI/UL 864 Listed: 101564744NYM-001
- CSFM Approved: 7165-1713:0101
- NYCFCO COA #6105

### Wiring Diagram



## Specification

Input Voltage (DC)	24 VDC (Operating range 18-28 VDC)
Operating Current	
Quiescent	11mA – All Driver Outputs Off
Alarm	50mA – All Driver Outputs Active
One Drive Output Active	.1042mA
Switches	16 Programmable Switch Inputs
LED Driver Outputs	48
External Monitoring Input	Supervised Closed Contact
Piezo (Buzzer)	Field Configurable On/Off, Pulse/Steady
Screw Terminals	12 - 24 AWG
Daisy Chain Headers	10-Way IDC Ribbon Connector for Multi-Module Interconnect

## Order Codes and Options

AX-I/O-48	Switch/LED Driver Module
-----------	--------------------------

[Check if this document is up to date](#) | [Give us feedback](#)

9564 Yellowhead Trail NW, Edmonton AB, T5G 0W4, Canada T: 1 (866) 462-7100 E: [info@harding-tech.com](mailto:info@harding-tech.com) W: [www.harding-tech.com](http://www.harding-tech.com)

As our policy is one of constant product improvement the right is therefore reserved to modify product specifications without prior notice.