

# Axis<sup>AX</sup>

## Outdoor Commander Series

The Outdoor Commander Series offers dependable visible and/or audible alarms for all outdoor needs.

Included with the WGE Series is the GOE or GOELP outdoor enclosure. The enclosure is made of high quality Lexan material, providing protection from weather related conditions and allowing the necessary full candela output. This highly constructed enclosure meets various installation requirements including deterring moisture from entering the enclosures.

The Outdoor Series is equipped with the 4" mounting plate which incorporates the Super-Slide™ feature that allows the installer to easily test for supervision. The product also features a locking mechanism which secures the product to the bracket without any screws showing.

The WGE Series also features the Checkmate™ - Instant Voltage Verification feature which allows the installer to check the voltage without removing the signal.

The WGE Series strobe has a minimal operation current and has a minimum flash rate of 1Hz and can vary up to 2Hz regardless of input voltage.

The WGE Series appliances are UL 464 and UL 1638 listed for use with fire protective systems and are warranted for three years from date of purchase.



### Features

- Shipped with UL1638 Listed 75 Candela Strobe
- Super-Slide™ Bracket - Ease of Supervision Testing
- Checkmate™ - Instant Voltage Verification
- Switch Selection for High or Low dBA
- Tamperproof Re-Entrant Grill
- Faceplate Available in Red or off-White
- GOELP/GOE Made of Clear Lexan®
- Unit Dimensions:
  - GOELP: 5.75" high x 4.75" wide x 3.25" deep
  - GOE: 5.75" high x 4.75" wide x 4.18" deep
- Outdoor Horn Requires GEH24 and GOELP/GOE
- Lower Installation and Operating Costs
- Switch for Mechanical and 2400Hz Tone
- Switch for Continuous Tone

### Listings and Approvals

- UL 464 & UL 1638 Listed
- BS+A/MEA: 285-91-E-XVI
- CSFM: 7135-0569:122
  - (WGEC) 7125-0569:127
  - (WGES) 7300-0569:124 (Enclosure)

## GEH24 - 24 Volt Low Profile Evacuation Horn

Model Number	Part Number	Nominal Voltage	Reverberant dBA @ 10ft. Per UL 464 <sup>1</sup>	In Anechoic Room dBA @ 10ft.
GEH24-R	904-1205-002	24 VDC	70-82	100
GEH24-W	904-1207-002	24 VDC	70-82	100

NOTE: Must order the GOE or GOELP separately when using the GEH24 in an outdoor application.

## WGES24 - 24 Volt Low Profile Evacuation Outdoor Strobe

Model Number	Part Number	Nominal Voltage	Candela (UL 1638)
WGES24-75WR	904-1219-002	24 VDC	75
WGES24-75WW	904-1220-002	24 VDC	75
WGES24-75PWR	904-1247-002	24 VDC	75
WGES24-75PWW	904-1248-002	24 VDC	75
WGES24-75WRLP	904-1261-002	24 VDC	75
WGES24-75WWLP	904-1263-002	24 VDC	75
WGES24-75PWRLP	904-1262-002	24 VDC	75
WGES24-75WWLP	904-1264-002	24 VDC	75

Model Designations:

"W" = Wall Mount  
 "R" = Red Faceplate  
 "W" = Off-White Faceplate  
 "P" = Plain (No lettering)

Plain Units are non-returnable  
 "LP" = Low Profile (GOELP Enclosure)

WGES24 and WGEC24 shipped with the GOE or GOELP outdoor enclosure.

## WGEC24 - 24 Volt Low Profile Evacuation Outdoor Horn/Strobe

Model Number	Part Number	Nominal Voltage	Candela (UL 1638)	Reverberant dBA @ 10ft Per UL 464	In Anechoic Room dBA @ 10ft
WGEC24-75WR	904-1217-002	24 VDC	75	70-82	100
WGEC24-75WW	904-1218-002	24 VDC	75	70-82	100
WGEC24-75PWR	904-1245-002	24 VDC	75	70-82	100
WGEC24-75PWW	904-1246-002	24 VDC	75	70-82	100
WGEC24-75WRLP	904-1257-002	24 VDC	75	70-82	100
WGEC24-75WWLP	904-1259-002	24 VDC	75	70-82	100
WGEC24-75PWRLP	904-1258-002	24 VDC	75	70-82	100
WGEC24-75PWLP	904-1260-002	24 VDC	75	70-82	100

NOTES:

- The WGE Series is listed for outdoor use.
  - Indoor operating temperature: 32 °F to 120 °F (0 °C to 49 °C)
  - Outdoor Operating Temperature: -31 °F to 150 °F (-35 °C to 66 °C)
- For nominal and peak current across UL regulated voltage range for filtered DC power and unfiltered (FWR [Full Wave Rectified]) power, see installation manual).
- Gentex does not recommend using a coded or pulsing signalling circuit with any of our strobe products.

## WGE Series Product Horn Current Ratings

Horn Mode	Minimum dBA @ 10ft. per UL 464 (High)	Minimum dBA @ 10ft. per UL464	Regulated 24 VDC Max. Operating @ High Setting (mA)
Temp 3 2400Hz	78	71*	28
Temp 3 Mechanical	76	70*	25
Temp 3 Chime	70*	66*	15
Continuous 2400HZ	81	74*	28
Continuous Mechanical	80	72*	25
Continuous Chime	70*	66*	15
Whoop	82	69*	56

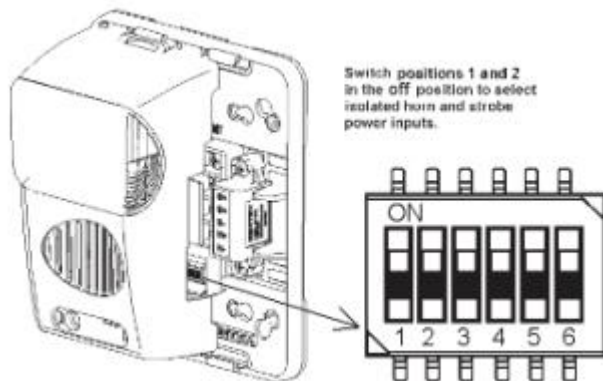
\* Operating the horn in this mode at this voltage will result in not meeting the minimum UL reverberant sound level required for public mode fire protection service. These settings are acceptable only for private mode fire alarm use. Use the high dBA setting for public mode application (not applicable when using the chime tone. The chime tone is always private mode).

NOTES: The sound output for the temporal 3 tone is rated lower since the time the horn is off is averaged into the sound output rating. While the horn is producing a tone in the temporal 3 mode its sound pressure is the same as continuous mode.

To obtain horn/strobe current draw, add the strobe current draw and the horn current draw.

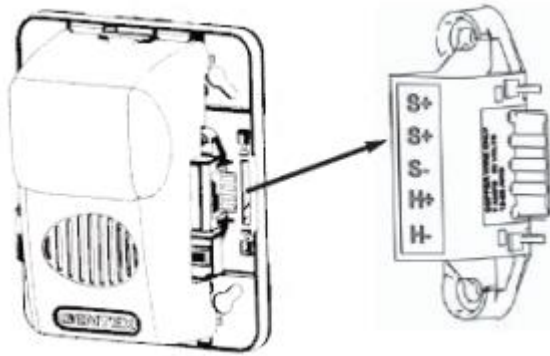
<sup>1</sup> RMS Current ratings are per UL average RMS method. UL max rating is the maximum RMS current within the listed voltage range (16-33 VDC for 24 VDC units and 8-17 VDC for 12 VDC units). For strobes the UL max current is usually at the minimum listed voltage (16 VDC for 24 VDC units and 8 VDC for 12 VDC units). For audibles the max current is usually at the maximum listed voltage. For unfiltered FWR ratings, see installation manual.

## Checkmate Instant Voltage Verification Switch Locations



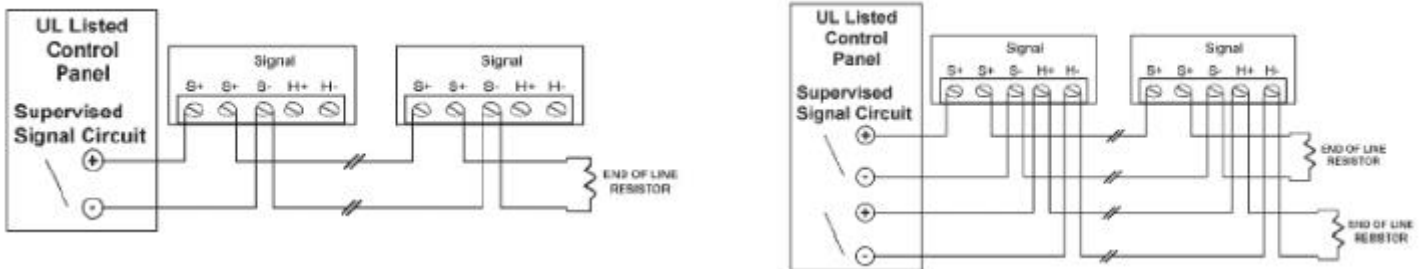
### Switch Position

	3	4	5
Mechanical Temp	ON	ON	ON
Mechanical Cont	OFF	ON	ON
Hi-Temp	ON	OFF	ON
Hi-Cont	OFF	OFF	ON
Chime Temp	ON	ON	OFF
Chime Cont	OFF	ON	OFF
Whoop	ON	OFF	OFF
Whoop	OFF	OFF	OFF

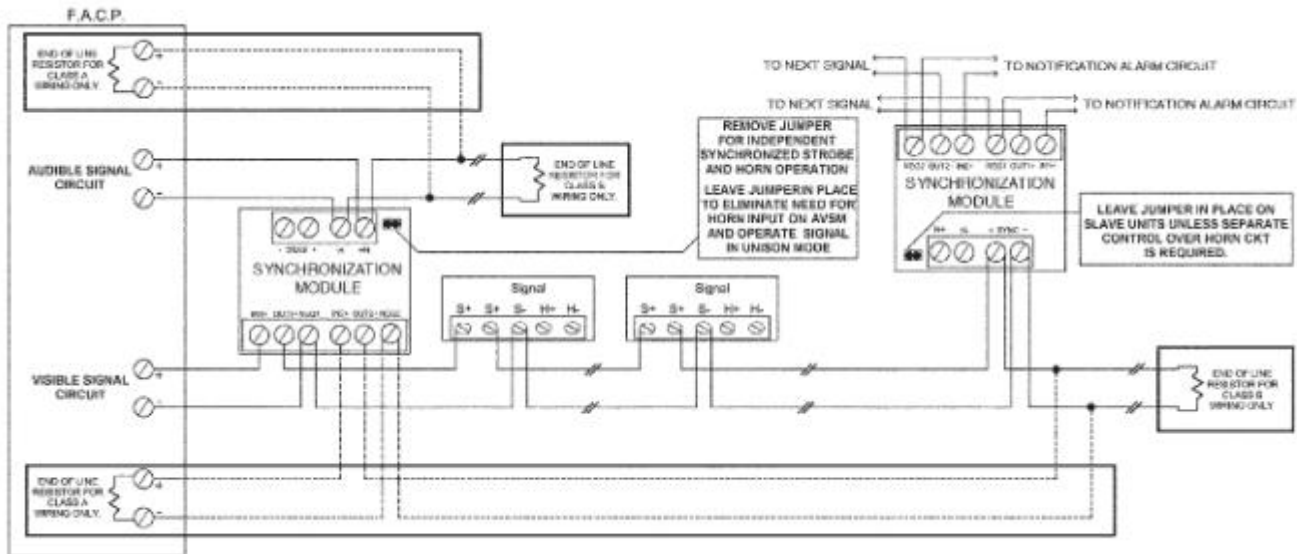


The access holes are provided in the back of the terminal block to allow the voltage to be measured directly without removing the device. Typically this would be done at the end of the line to confirm design criteria. Less than 100 measurements will be taken using S+ and S- locations although access is provided to other locations although access is provided to other locations. NOTE: Care should be taken to not short the test probes.

## Conventional WGE Series Wiring Diagram



## Wiring Diagram WGE Series with Gentex Synchronization Module



NOTE: See technical Bulletin 015 for proper synchronization module for application.

## Specification

The audible and/or visible signal shall be Gentex WGE Series or approved equal and shall be listed by Underwriters Laboratories Inc. per UL 1638 and/or UL 464. The notification appliance shall also be listed with the California State Fire Marshal (CSFM) and the Bureau of Standards and Appeals (NYC).

The notification appliance (combination audible/visible) shall produce a peak sound output of 100 dBA or greater at as measured in a anechoic chamber. The signaling appliance shall also have the capacity to silence the audible signal while leaving the visible signal having the ability to be synchronized.

The audible/visible and visible signaling appliance shall also maintain a minimum flash rate of 1Hz or up to 2Hz regardless of power input voltage. The appliance shall have an operating current of 112mA or less for the 75cd strobe circuit. The appliance shall also be capable of meeting the candela requirements of the ADA (75cd).

The appliance shall be polarized to allow for electrical supervision of the system wiring. The unit shall be provided with a mounting bracket with terminals with barriers for input/output wiring and be able to mount a single gang or double gang box or double workbox without the use of an adapter plate. the unit shall have an input voltage range of 16-33 volts with either direct current of full wave rectified power for 24 volt models.

The appliance shall be capable of testing supervision without disconnecting the wires. Also the appliance shall be capable of mounting to a surface back box. the unit shall be able to verify voltage at the unit without removing the unit.

The appliance has extended temperature range of -31 °F to 150 °F (-35 °C to 66 °C). The appliance shall satisfy virtually all outdoor and severe environment applications. The GOE Enclosure includes a gasket that must be inserted between the box and mounting bracket. There are drain holes in the back box to allow for drainage, the seal on the GOE enclosure is not water tight. The GOELP Enclosure includes a weather seal for mounting to wall and intended for use with universal electrical box. To allow for drainage, bottom edge of enclosure box is not water tight.

Check if this document is up to date | Give us feedback

9564 Yellowhead Trail NW, Edmonton AB, T5G 0W4, Canada T: 1 (866) 462-7100 E: [info@harding-tech.com](mailto:info@harding-tech.com) W: [www.harding-tech.com](http://www.harding-tech.com)

As our policy is one of constant product improvement the right is therefore reserved to modify product specifications without prior notice.